

**CERTIFIED LAND CORNER RECORDATION**

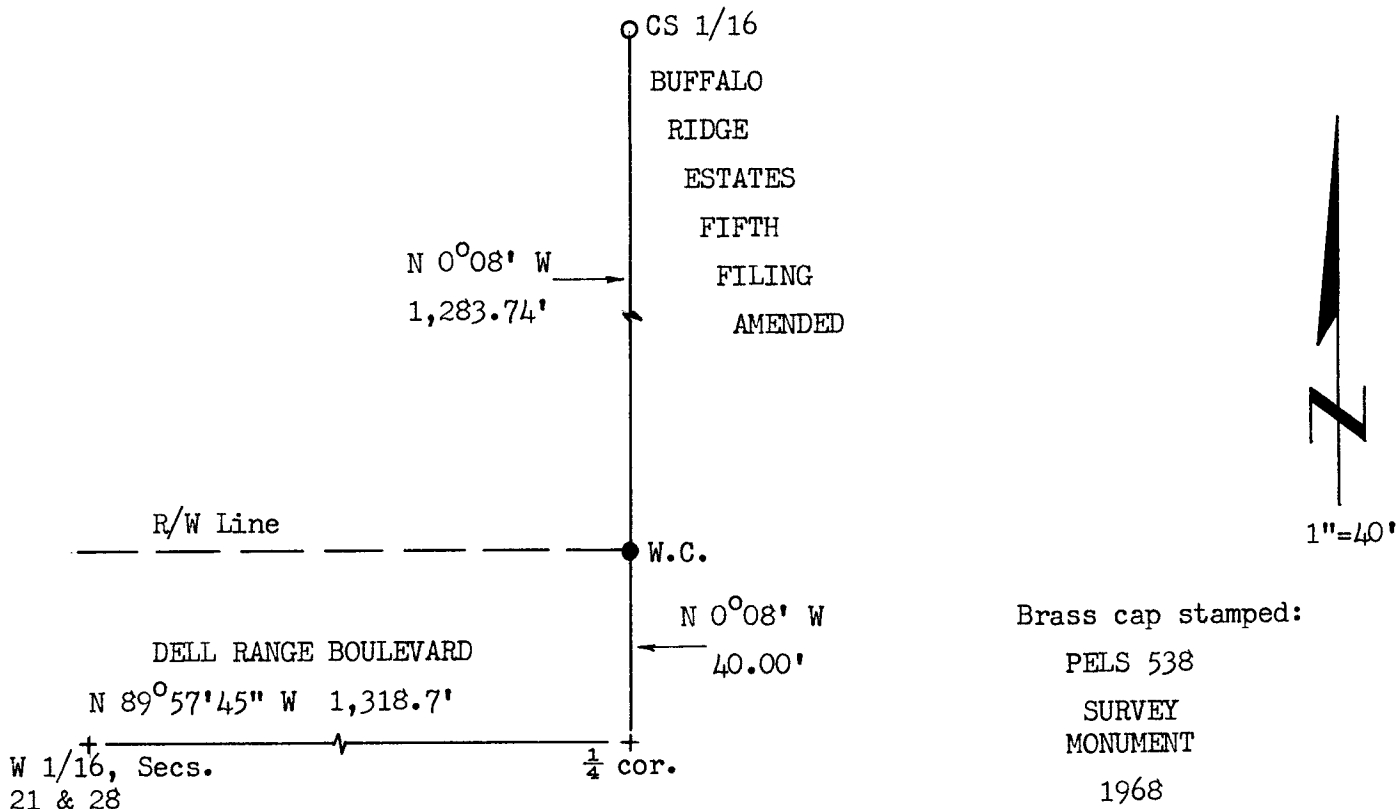
DESCRIPTION OF CORNER EVIDENCE FOUND, AND ORIGINAL RECORD (if known)

LOCATION Corner falls in traveled way of Dell Range Boulevard.  
 $\frac{1}{4}$  S. 21 A 6" dia. concrete monument with brass cap bears N 0°08' W,  
 $\frac{1}{4}$  S. 28 40.00 feet distant.  
 T. 14N., R. 66W.  
 6th P.M.

DESCRIPTION OF MONUMENT AND ACCESSORIES ESTABLISHED  
 TO PERPETUATE THE ORIGINAL LOCATION OF THIS CORNER:

Monument (W.C.) found in good condition, no re-monumentation required.

SKETCH, WITH COURSE AND DISTANCE TO ADJACENT CORNER IF DETERMINED IN THIS SURVEY.  
 (May Sketch or Paste Reproduction on Reverse Side.)



I, R.L. Hudson certify that I have carefully performed ~~or reviewed~~ the work done on the diagrammed corner as reported on this recordation form and approve the same.

R.L. Hudson Wyoming L.S. No. 519  
 Signature of Surveyor Registration No.

STATE OF WYOMING,  
 Office of Clerk and Recorder,  
 County of Laramie

This "corner record" was filed for record on the 23<sup>rd</sup> day of May, 1972, was noted on the cross-index plat and is assigned page No. 17-66, in book No. JONE.

Jolly B. Hill JW  
 County Official

Cross Index No. _____	T. _____	R. _____	Mer. _____
_____	T. _____	R. _____	Mer. _____
_____	T. _____	R. _____	Mer. _____
_____	T. _____	R. _____	Mer. _____
_____	T. _____	R. _____	Mer. _____
_____	T. _____	R. _____	Mer. _____
_____	T. _____	R. _____	Mer. _____

R-11 14-66

The State of Wyoming }  
County of Laramie } SS

This instrument was filed for record  
at 9 18 o'clock A M on the  
23 rd day of May  
A. D. 19 22 and duly recorded in  
Book ..... on page .....



County Clerk & Ex-Officio Register of Deeds  
By..... Deputy